

The 5th Wave

By Rich Tennant

©RICH TENNANT

I'm no criminalist, but I've got
a hunch we're looking for someone
well over six feet tall.



Tire & Shoe Impressions

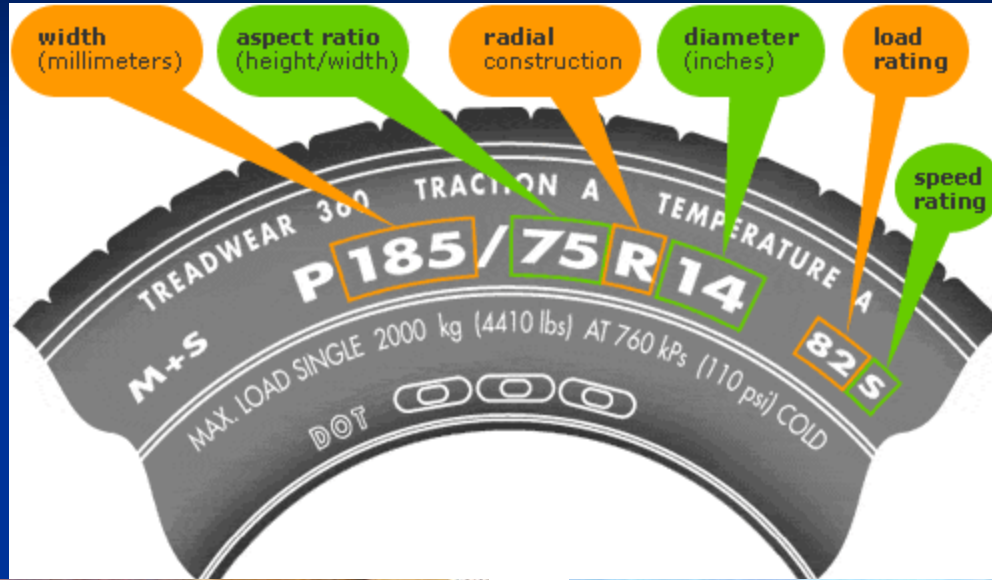
Tire Impressions

- Class Evidence (indicates manufacturer & size)
- Provides information about tire size, tread width/design, manufacturer, turning radius & tire position
- A turn is the best place to obtain tire prints (provides information about wheelbase, track width, turning radius)
- Wear patterns: help to individualize a tire print (may be due to improper alignment, tears, or gouges)

Tire Tread

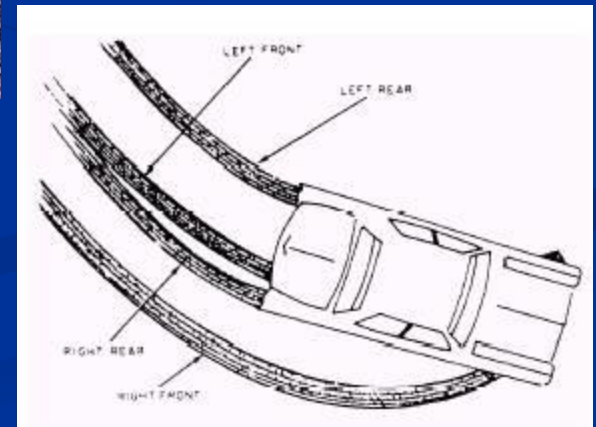
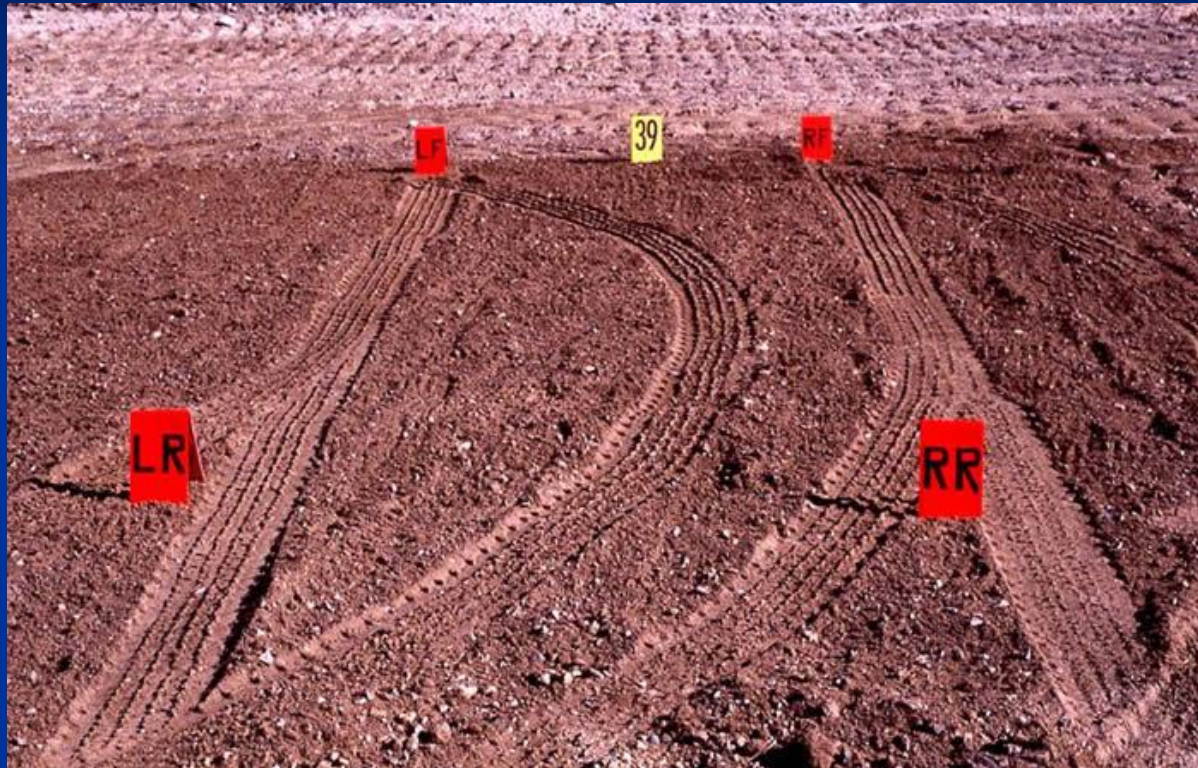


Tire Size

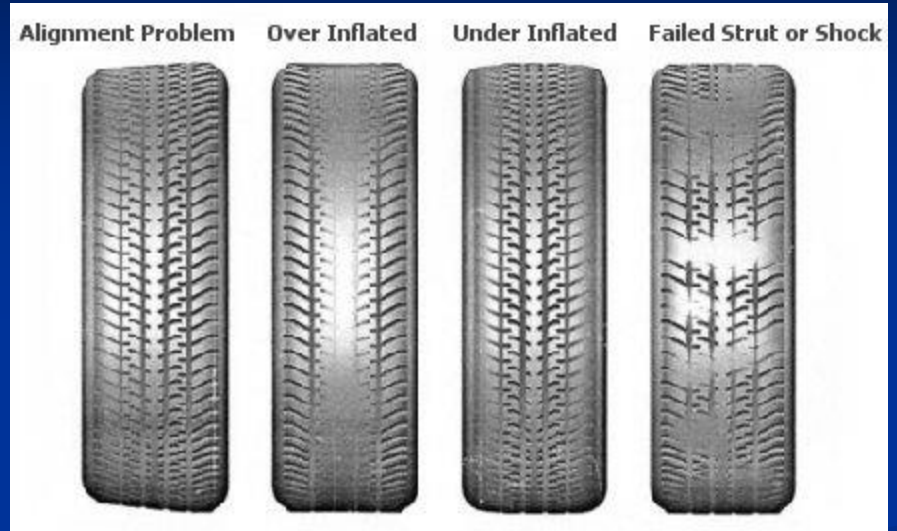




Tire Impressions on a Turn



Individualizing Evidence



Processing Tire Prints

- Two-Dimensional Prints – photographed from a 90° angle
- Three-Dimensional Prints – photographed & casted using dental stone (durable plaster) or Snow Print Wax. If the print is left in soft mud or sand, it must be sprayed with shellac before casting.

2-D Tire Impression



Casted Tire Impression

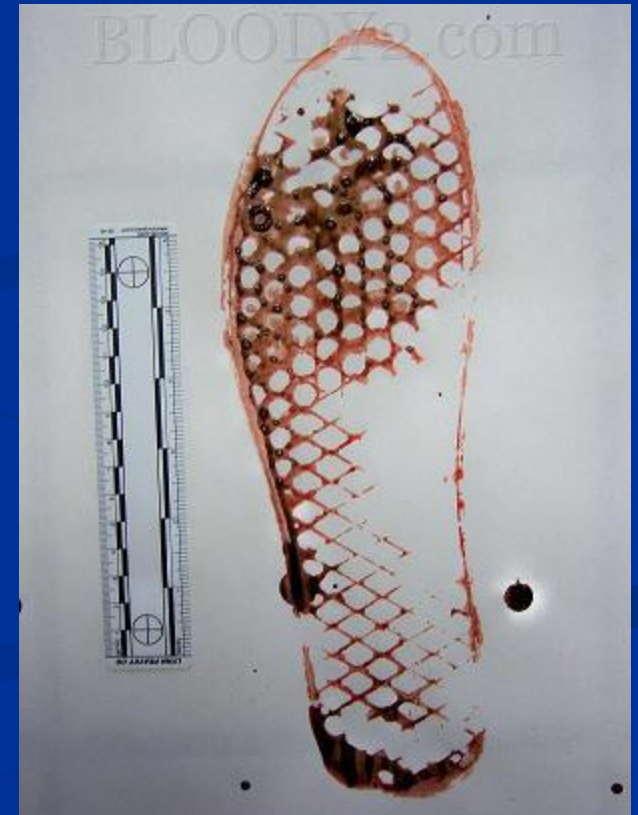


Shoe Impressions

■ 3 Types

- Patent – visible, from walking through dirt, dust, blood, paint, etc. (photographed)
- Plastic – 3-D, from walking through mud or snow (casted like tire impressions)
- Latent – invisible to the naked eye, left in the form of oil or grime on a smooth surface (can be dusted and lifted with tape like fingerprints)

Patent Shoe Print



Plastic Shoe Print



Casted Shoe Impression



Information Gained

- Wear patterns (cuts, nicks, scratches)
- Size and style
- Gait patterns, length of stride
- Pigeon toed?



Wear Patterns



Style



Gait/Length of Stride



DIFFERENT TYPES OF FOOTPRINTS

